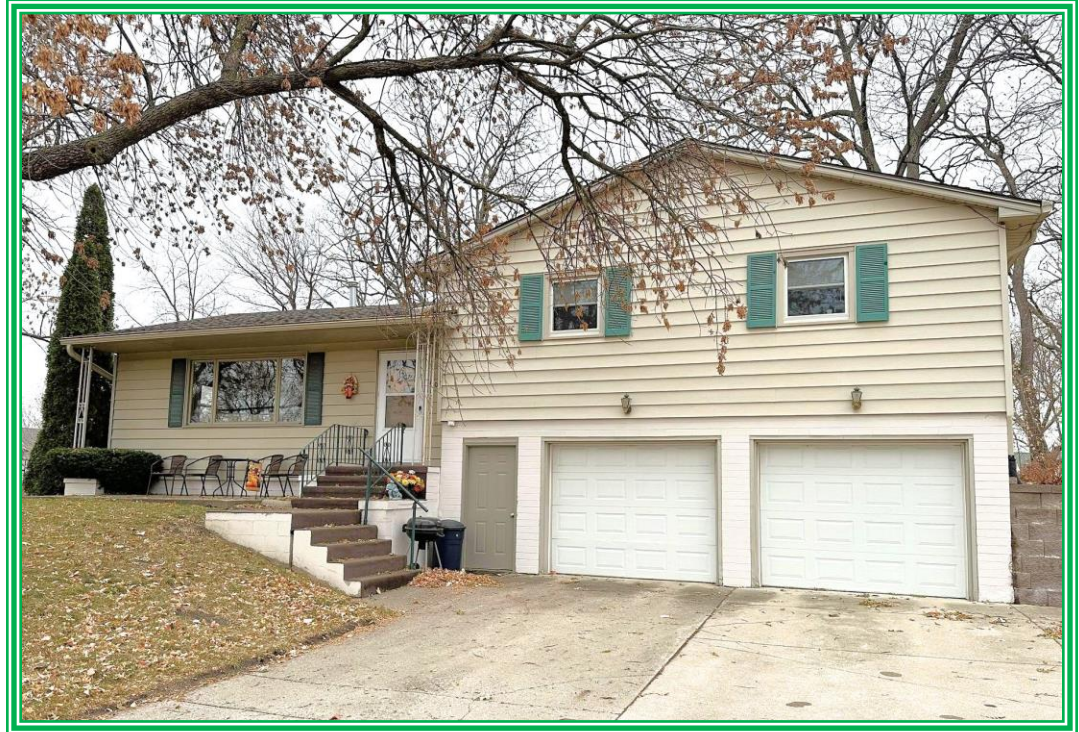


602 Lawler Street, Emmetsburg, Iowa

- Curb Appeal & Corner Lot -



Property Details:

YEAR BUILT	1963	HEAT	Gas Forced	POSSESSION	30 Days
SQUARE FEET	1,458	AVG. GAS	\$77.28	AIR COND.	Central
STYLE	Split Level	AVG. ELEC	\$98.00	BEDROOMS	3
BATHROOMS	1 1/2	WATER	City	SEWER	City
STREET	Paved	GARAGE	Att. 2 Car	TAXES	\$2,050.00
BASEMENT	Partially Finished	LOT SIZE	132' x 66'	ZONING	Single Family



For more information,
call Judy Johnson @
712-480-3220

**Move In Ready 3 Bedroom Home with Many Features Including:
Updated Paint & Floorcoverings. Large Eat-In Kitchen with Updated Countertops,
Backsplash, Sink & Appliances. Formal Dining Room. Large Bathroom.
Finished Family Room in Basement. Steel Siding and Vinyl Windows.**

LISTING PRICE:

\$149,900.00

JOHNSON REALTY

921 Broadway, Emmetsburg, Iowa 50536

712-852-4921

(email) vic@emmettsburghomes.com

www.emmettsburghomes.com

NOTE: Information is believed to be accurate but is not guaranteed.